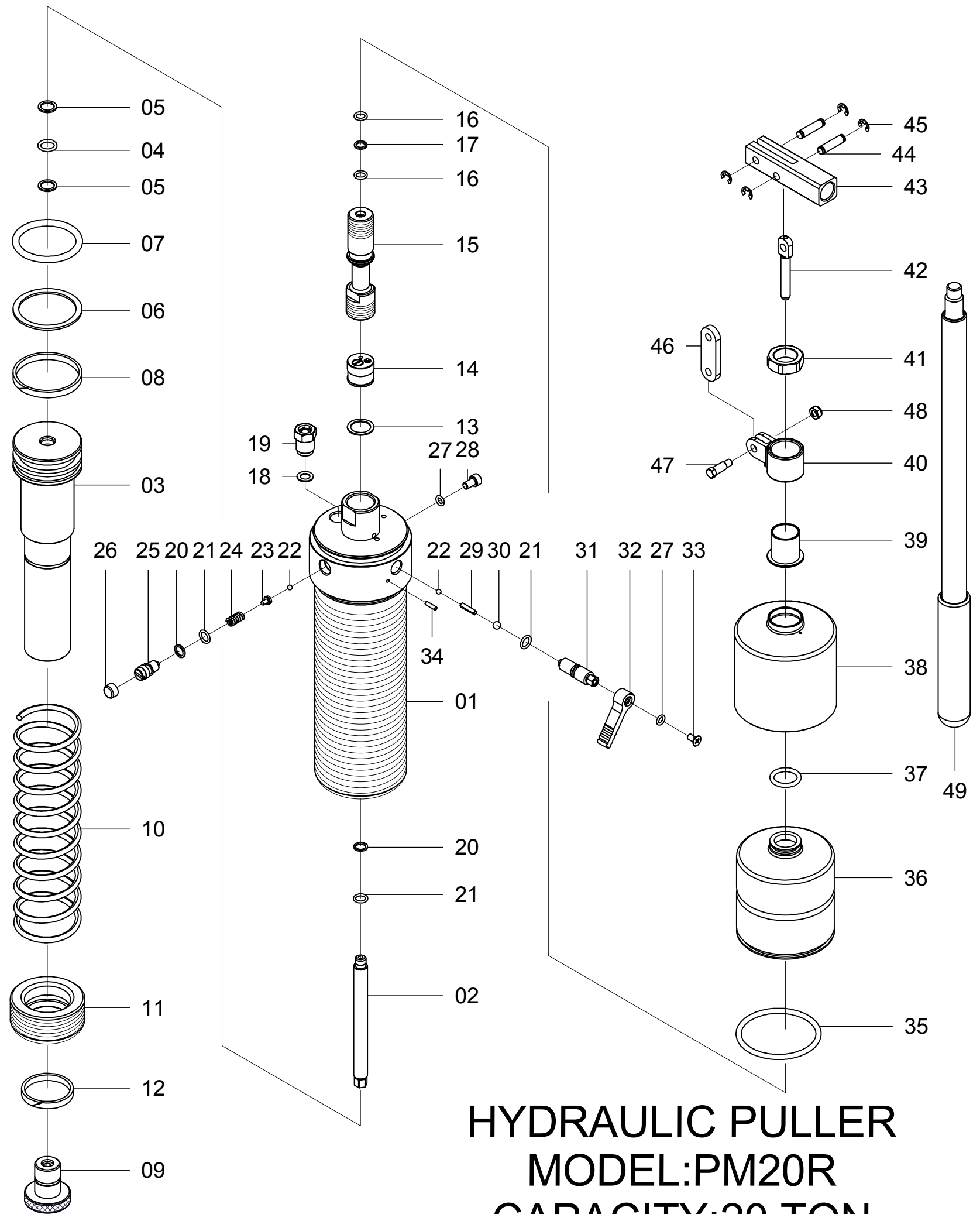


REF NO.	PARTS NO.	DESCRIPTION	QTY
01	E0889	Puller Body	1
02	E0887	Main Piston	1
03	B0707	Puller Piston Rod	1
04	☆ GA003	O-Ring	1
05	☆ G0004	Back-Up Ring	2
06	☆ G0320	Back-Up Ring	1
07	☆ GA303	O-Ring	1
08	G0599	Split Ring	1
09	B0708	Removable Cone Assembly	1
10	J0202	Compression Spring	1
11	E0881	Rod Wiper	1
12	G0448	Split Ring	1
13	J0031	Copper Washer	1
14	B1062	Safety Valve	1
15	E2056	Pump Piston Housing	1
16	☆ GA050	O-Ring	2
17	☆ G0108	Back-Up Ring	1
18	J0057	Washer	1
19	B0894	Inlet Valve	1
20	☆ G0072	Back-Up Ring	2
21	☆ GA053	O-Ring	3
22	K0011	Steel Ball	2
23	E0006	Spring End Cap	1
24	J0140	Spring	1
25	H0228	Screw	1
26	C0161	Cap	1
27	☆ G0168	O-Ring	2
28	H0036	Oil Fill Screw	1
29	K0026	Pin	1
30	K0001	Steel Ball	1
31	E0888	Relief Valve Screw	1
32	L0111	Relief Valve Knob	1
33	H0240	Screw	1
34	I0111	Spring Pin	1
35	☆ G0304	O-Ring	1
36	☆ G0302	Reservoir Bladder	1
37	☆ G0297	O-Ring	1
38	D0630	Bladder Housing	1
39	E1413	Piston Housing Cap	1
40	B0640	Swival Clevis	1
41	E0866	Retaining Nut	1
42	E2057	Pump Piston Rod	1
43	C0715	Handle Clevis	1
44	I0056	Clevis Pin	2
45	I0051	E-Ring	4
46	C0714	Link Connector	1
47	E0760	Clevis Screw	1
48	H0198	Anti-Loosen Nut	1
49	B0738	Handle Lever	1

☆ Items included in Repair kit



HYDRAULIC PULLER MODEL:PM20R CAPACITY:20 TON