

Total bolt load control

Without correct bolt load control, the risks for severe failure, leakage, break down and bodily injuries rise drastically. Throughout the modernization of industry, there hasn't been a sufficient way to check the bolt load, until now!

TensionCam proudly presents our devices and systems, that with reliability, cost effectiveness and it's easy handling, can provide all the support and information that the industry is currently lacking when it comes to bolt load control. With our new design for bolts and nuts, that is accompanied by our app integration, TensionCam can within seconds provide in-depth charts and data overviews.

Fix the relaxation issues with environmental resistant bolt and nuts, that comes with modern app integration, and possibility for remote support analysis.

- ☑ Total bolt load control
- ☑ Bolt relaxation control & neighbor-effect
- ☑ Wide range of industry applications
- ☑ Insights supplied in easy and comprehensive ways
- ☑ Patented
- ☑ Environment resistance

TensionCam™



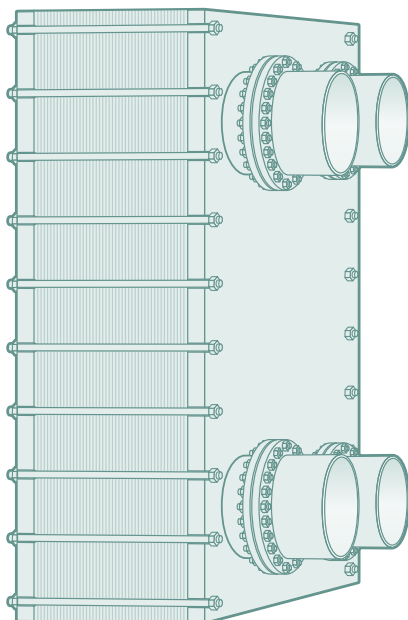
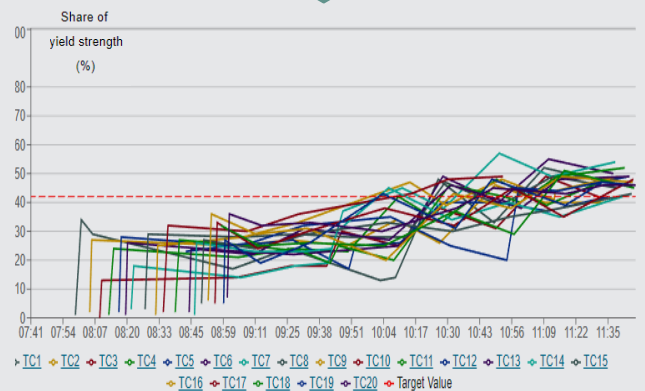
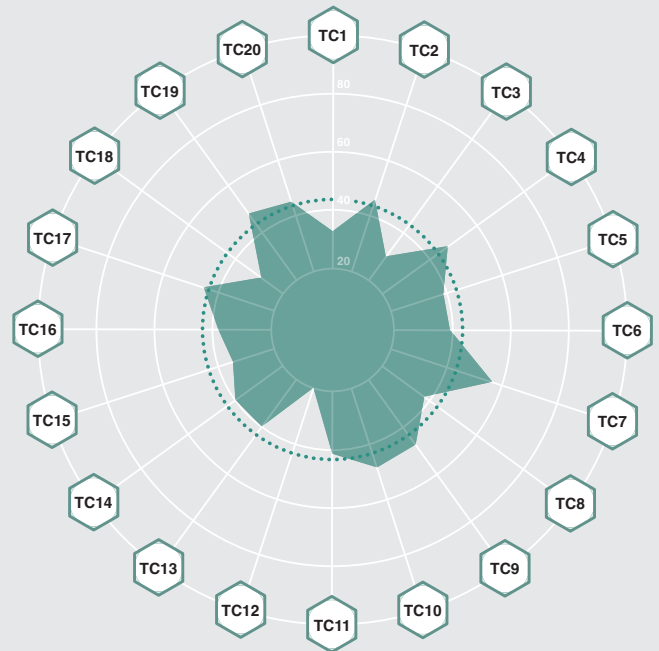


With the patented TensionCam concept the clamp load is measured by using a special sensor module.

The module actually includes a fingerprint sensor. But instead of providing fingerprint patterns, the module – when docked to the bolt head – makes images of a precision machined pattern in a cavity of the bolt head.

It then sends the information to the TensionCam app. An app that is tailormade for user interface, measurements and follow-up. Once you have docked the sensor module the measurement takes place automatically.

All measured values are saved on our server and are available in trend diagrams for each individual bolt joint. While also maintaining a measurement precision within 5% of full scale.



Application examples:

- ☑ Foundation clamp control and security
- ☑ Articulated hauler wheel control
- ☑ ...
- ☑ ...

